

REVISIONS				
REV	DESCRIPTION OF REVISION	ECN No.	DATE	APPROVED
A	INITIAL RELEASE	—	26/07/12	M. Dong

## TECHNICAL DATA

### Electrical

Impedance	50 Ω
Frequency range	0~50 GHz
VSWR	1.15:1
Contact resistance	
-centre contact	≤3mΩ
-outer contact	≤2mΩ
Insulation resistance	≥3000MΩ

### Mechanical & Environmental

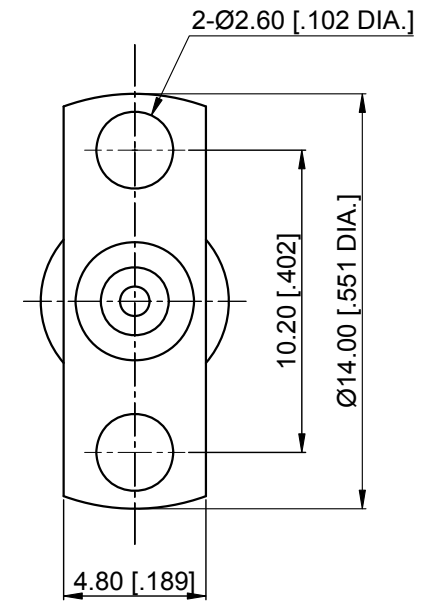
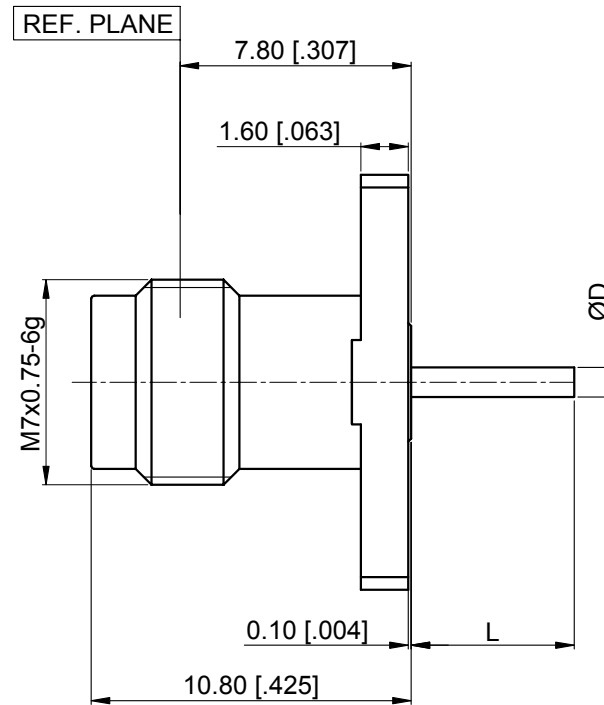
Durability (matings)	>500
Temperature range	-55 °C ~ +165 °C
RoHS Compliant	Yes

### Material & Finish

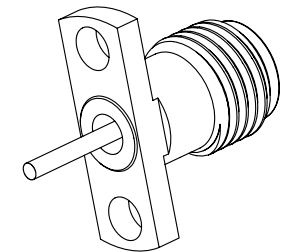
Body	Stainless Steel (SU303), Passivated
Pin Contact	Beryllium Copper Alloy, Gold-plated
Insulator	PEI

### Interface Standards

2.4mm	IEEE STD 287-2007
-------	-------------------



Part Number	D	L
C11214026A	0.75 [.029]	9 [.354]
C11214026B	0.86 [.034]	8.75 [.344]
C11214026C	1 [.040]	5.5 [.216]
C11214026D	1.04 [.041]	6.34 [.250]
C11214026E	1.2 [.047]	3 [.118]



### NOTES:

- ALL SPECIFICATIONS ARE SUBJECT TO CHANGE WITHOUT NOTICE AT ANY TIME
- UNLESS OTHERWISE SPECIFIED ALL DIMENSIONS ARE NOMINAL.

DRAWN:	W. Shen	26/07/12
CHECKED:	K. Liu	26/07/12
APPROVED:	M. Dong	26/07/12
UNLESS OTHERWISE SPECIFIED, DIMENSIONS ARE IN MILLIMETERS (INCHES). UNLESS OTHERWISE SPECIFIED DIMENSIONAL TOLERANCES ARE:		
.XX	±0.13 [.005"]	
.X	±0.20 [.008"]	
X	±0.50 [.019"]	
ANGULAR TOLERANCES ARE: ALL=±1°		

TITLE:

2.4mm Straight Female,  
Air Line Through the Wall,  
2 Hole Flange

DO NOT SCALE  
DRAWING

PROJECTION:

 www.connov.com			
SIZE:	SCALE:	SHEET:	REV:
A4	4:1	1/1	A